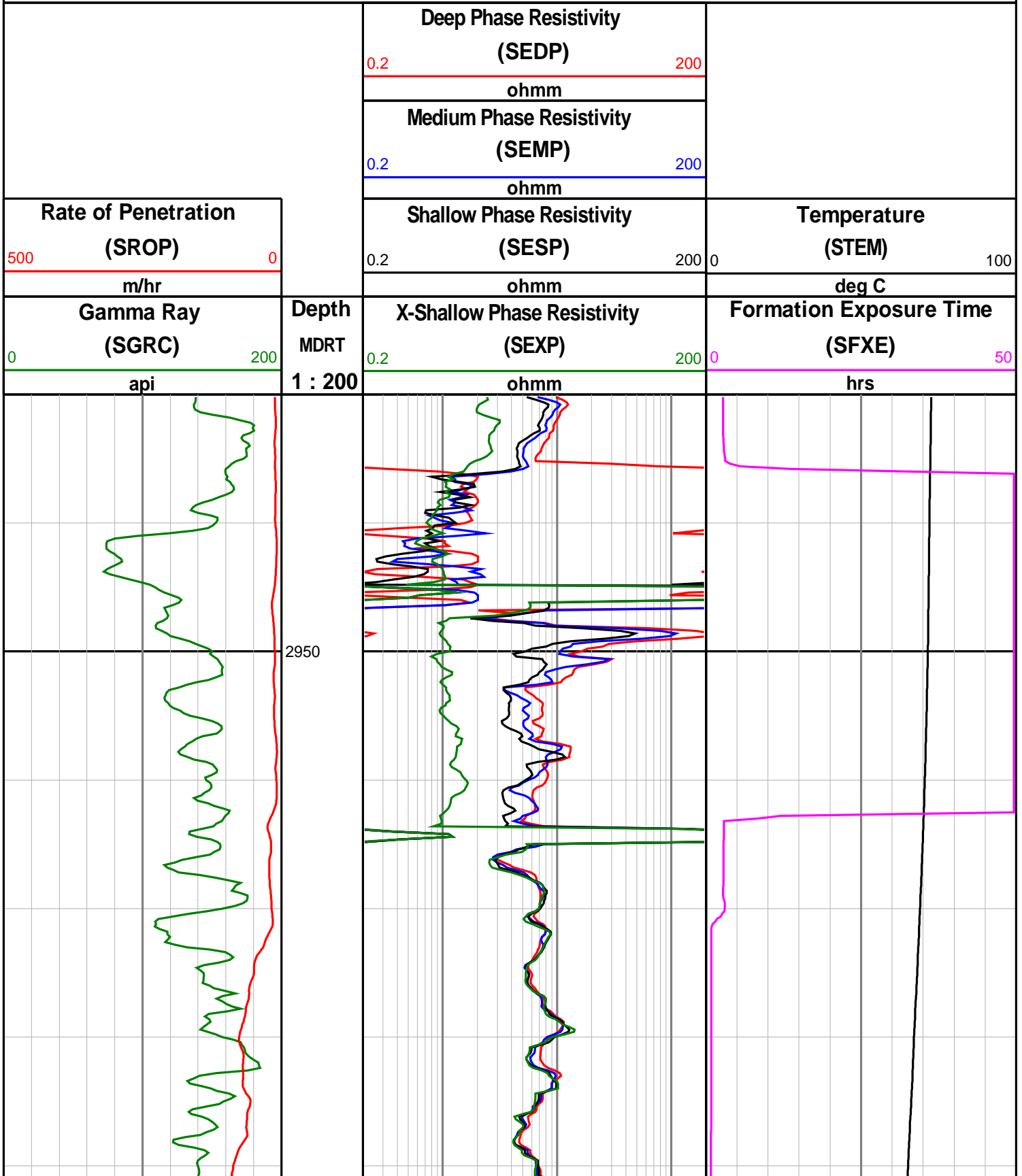
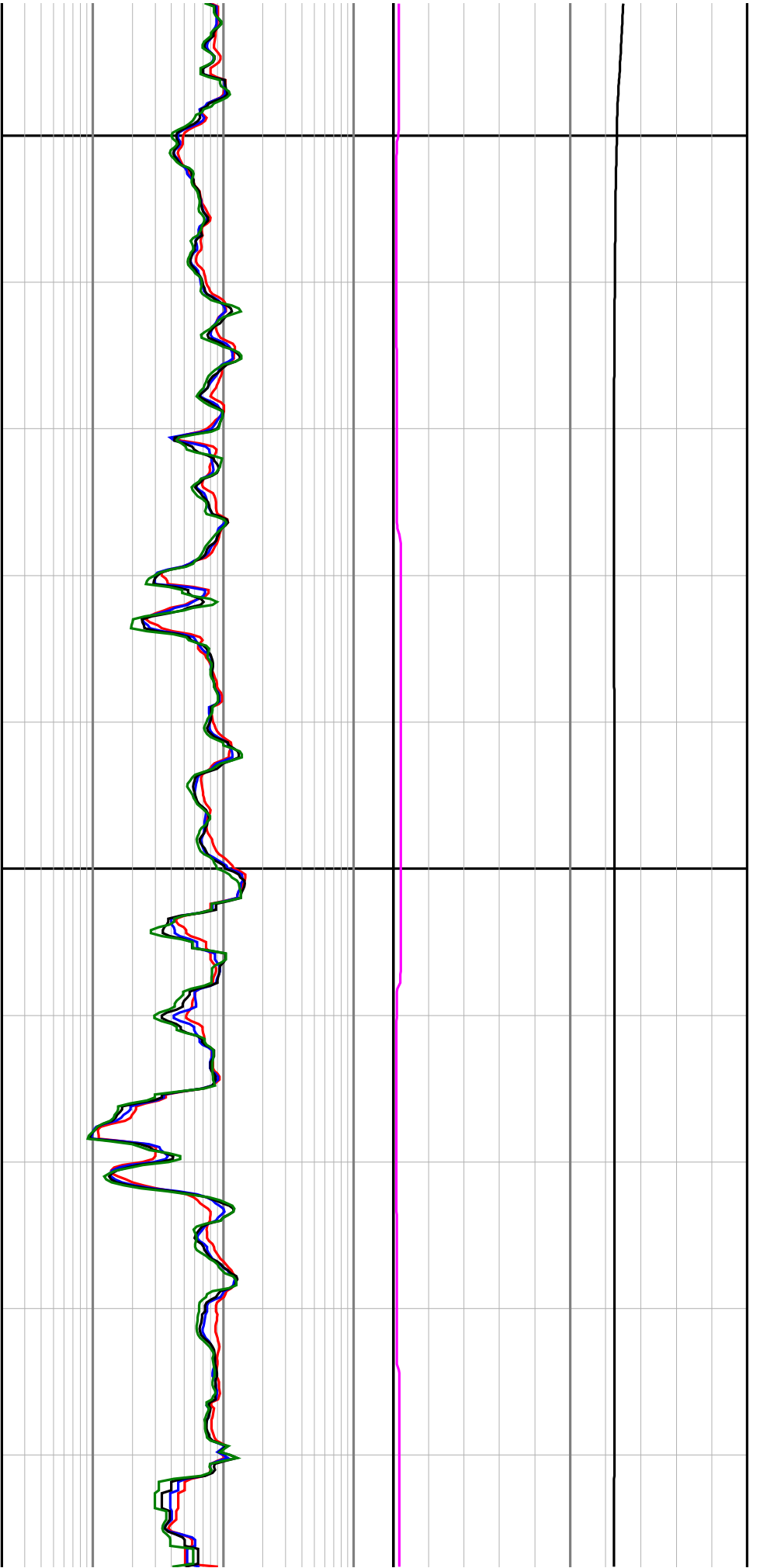
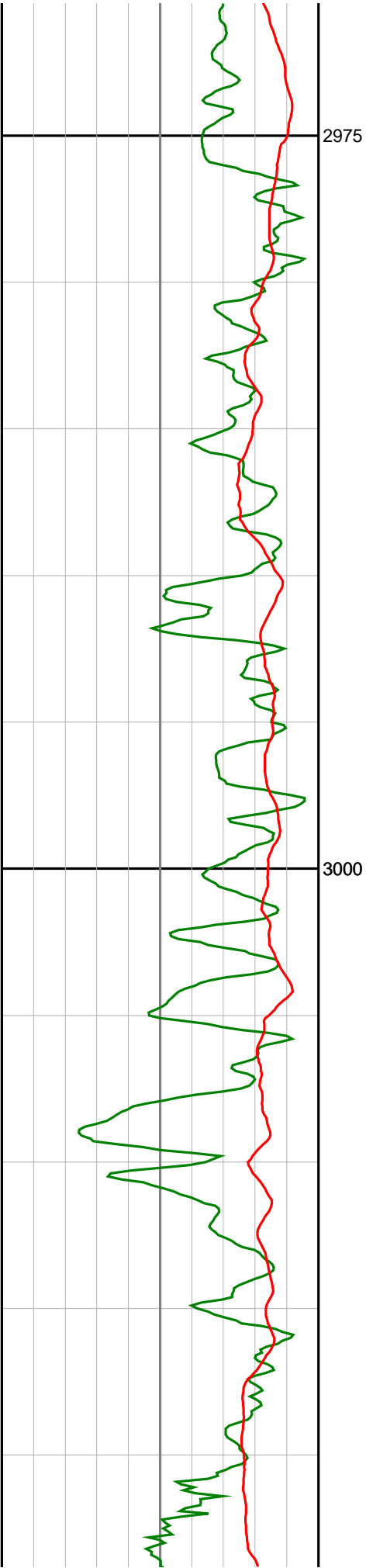


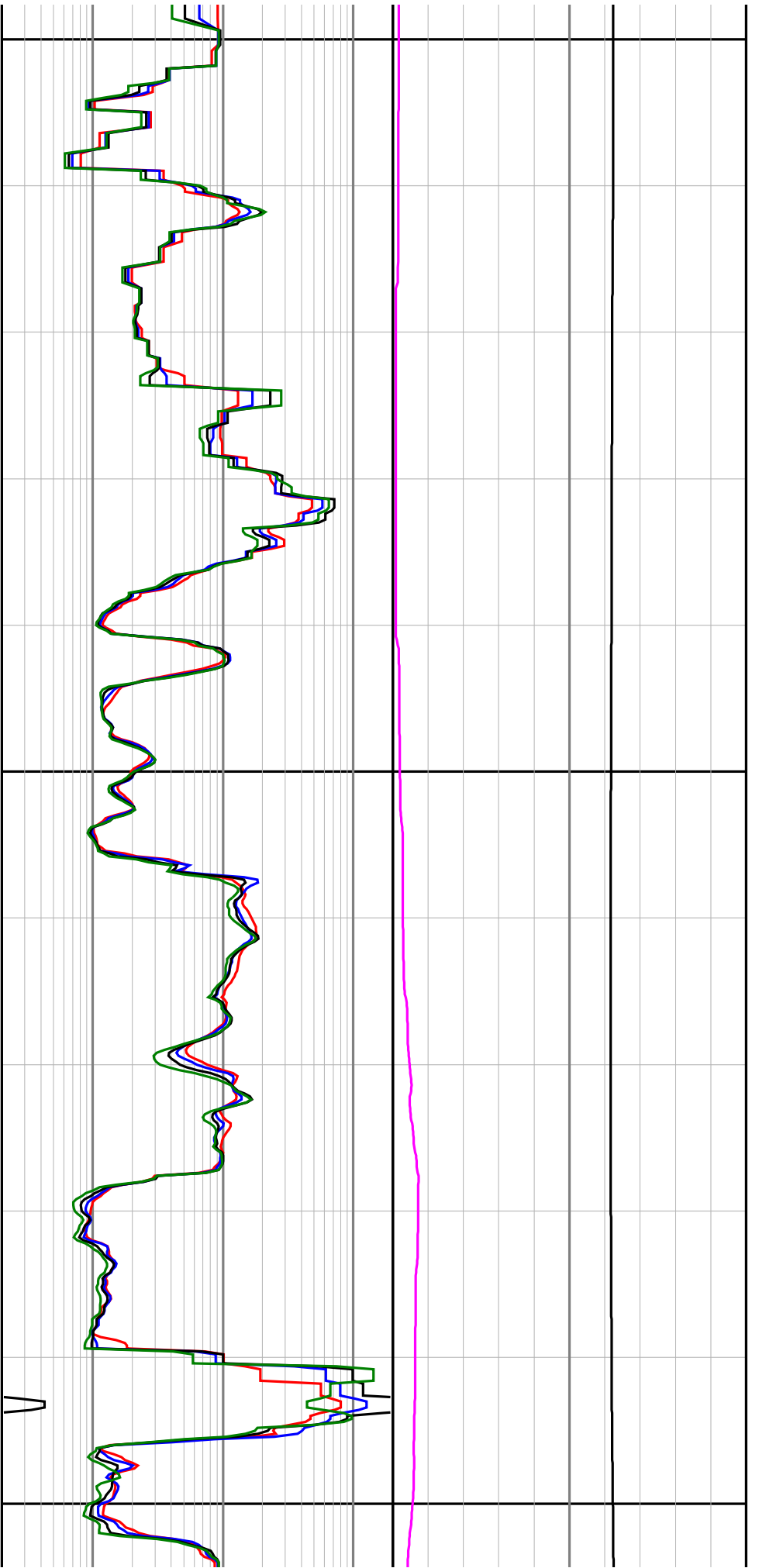
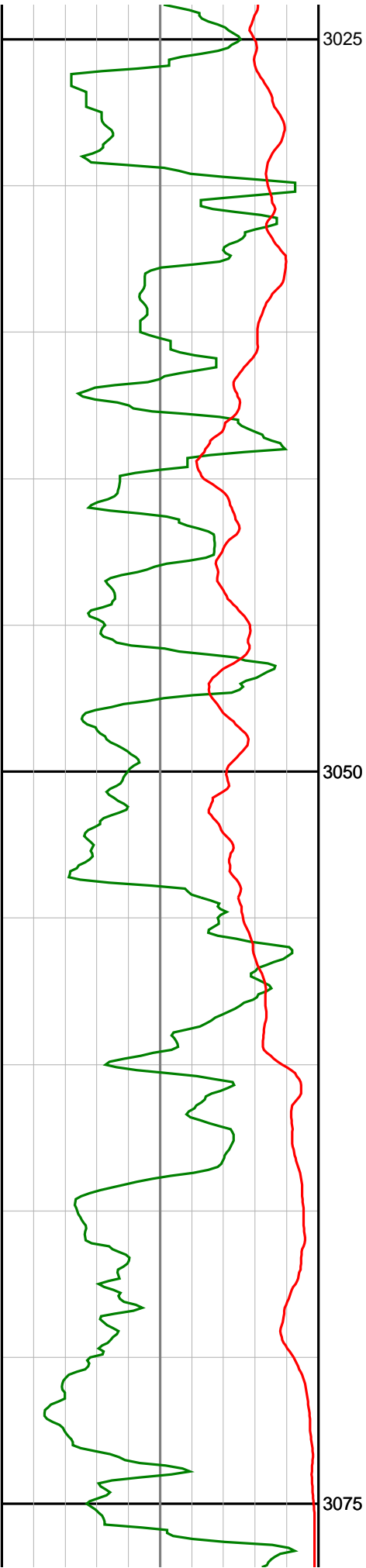
Anzon Australia Ltd

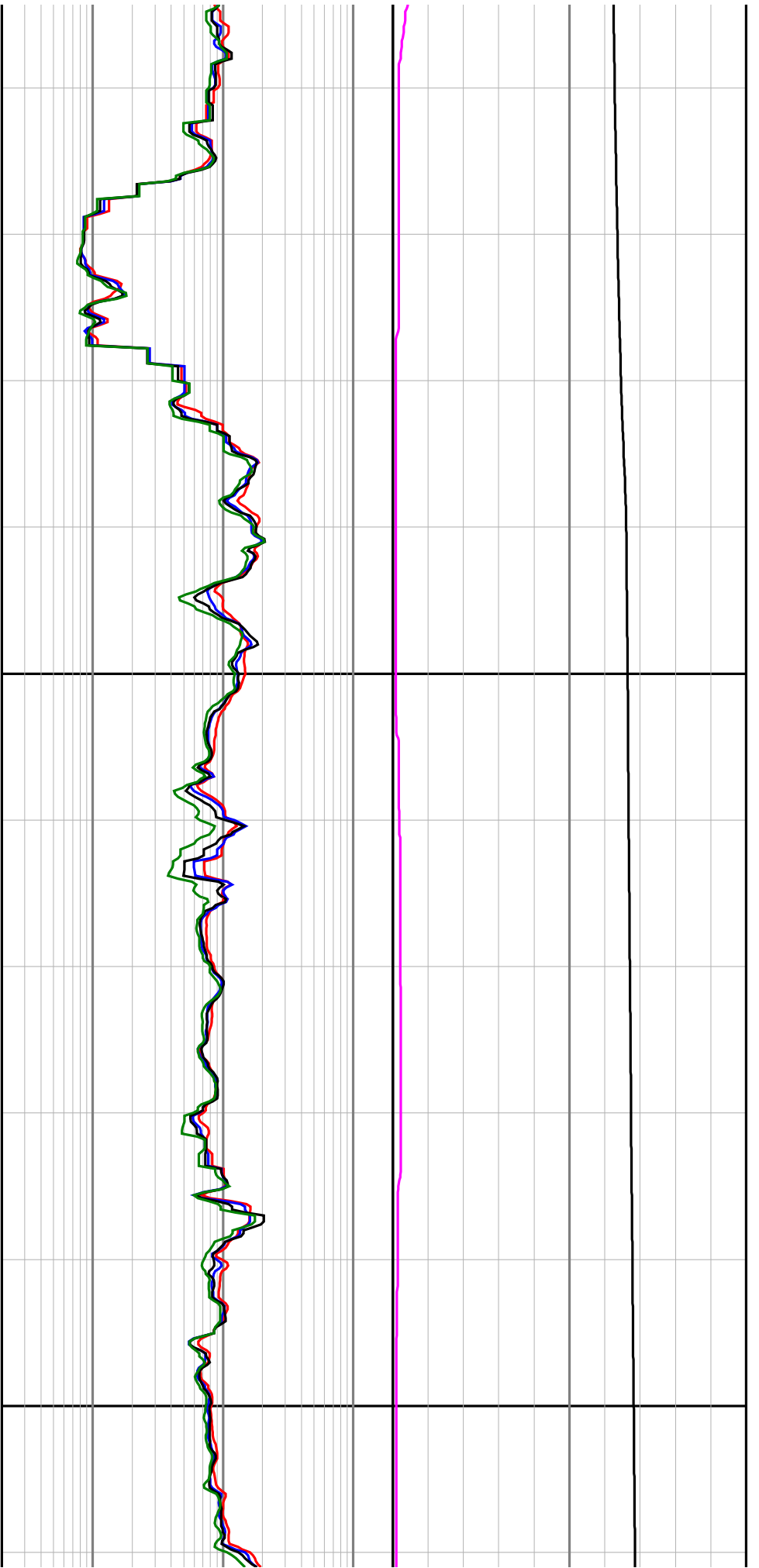
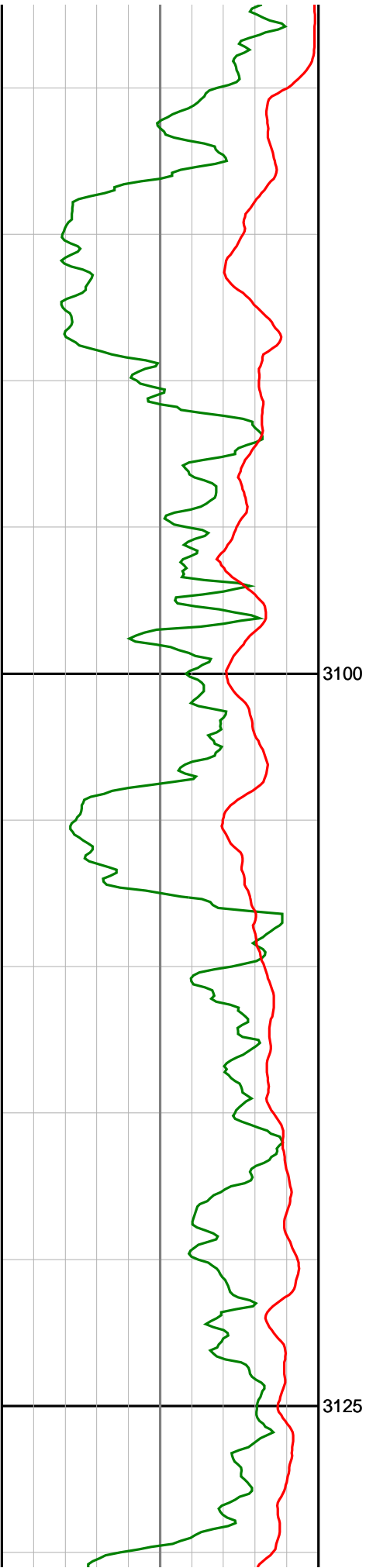
Basker-2

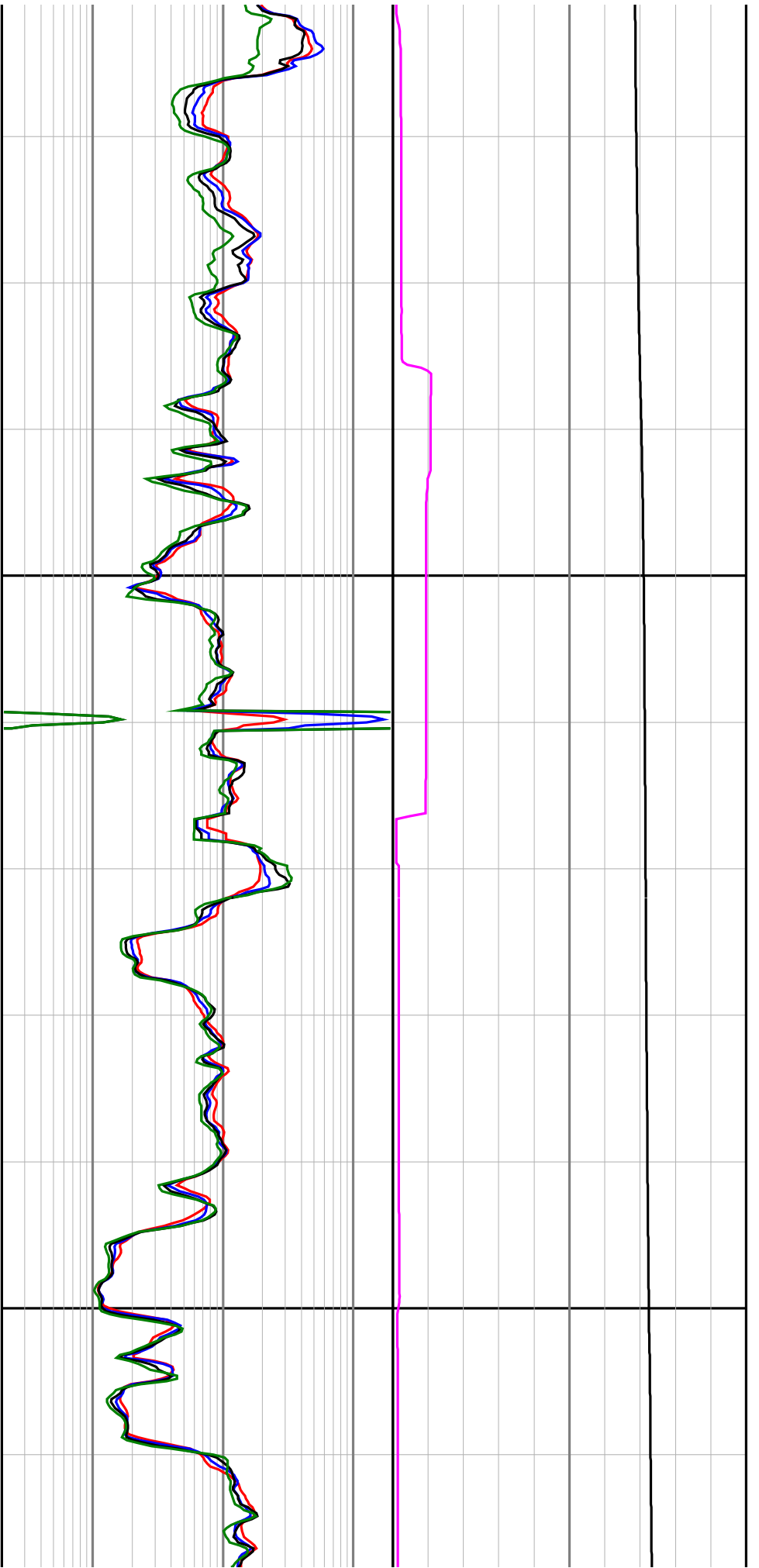
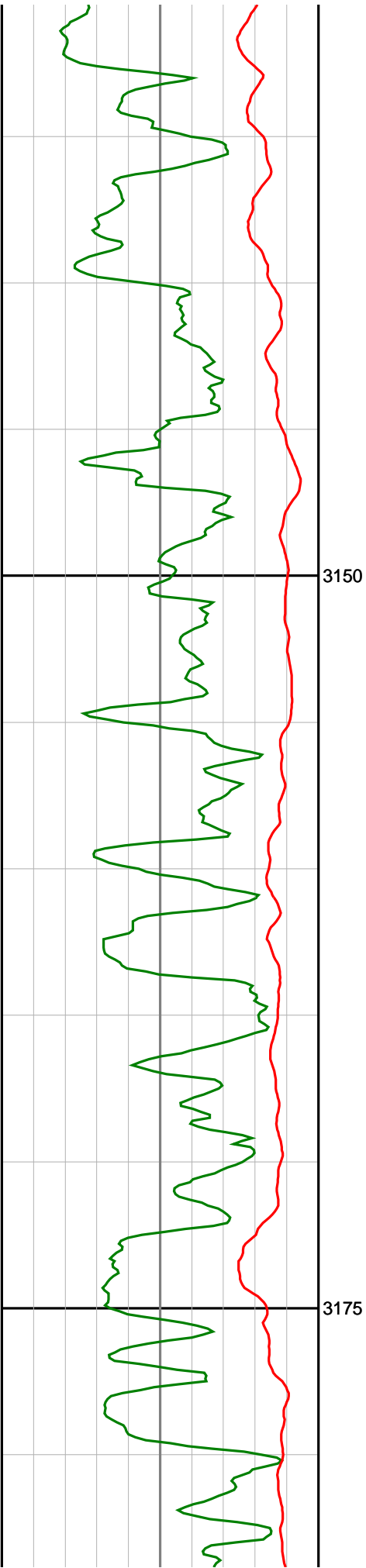
LWD Recorded - 8 1/2" Hole

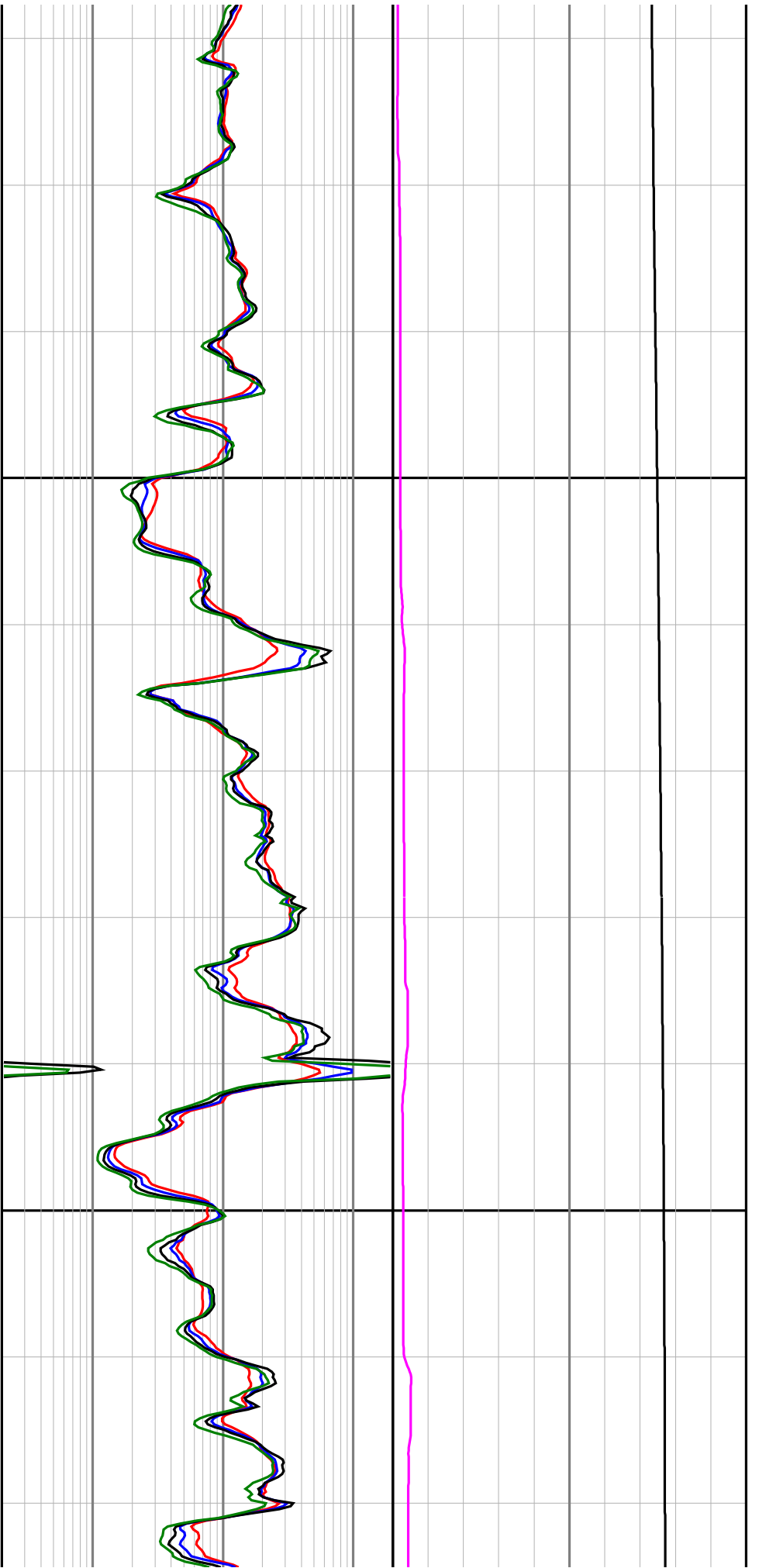
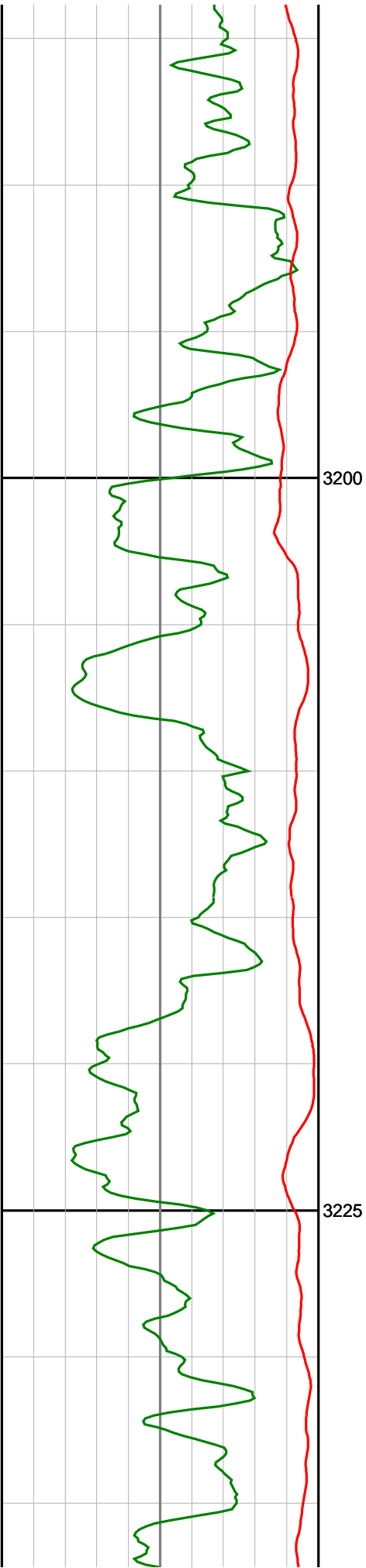


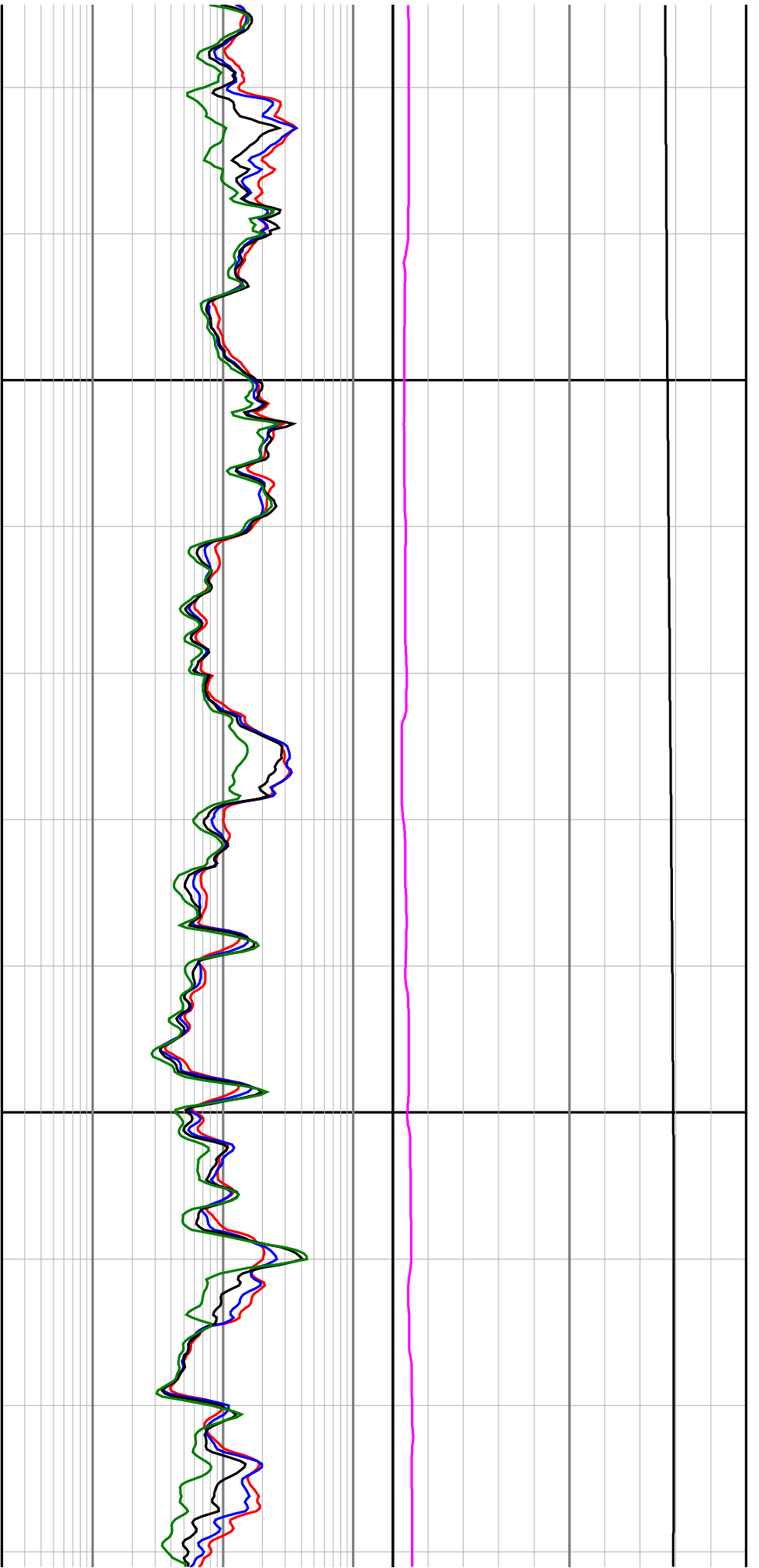
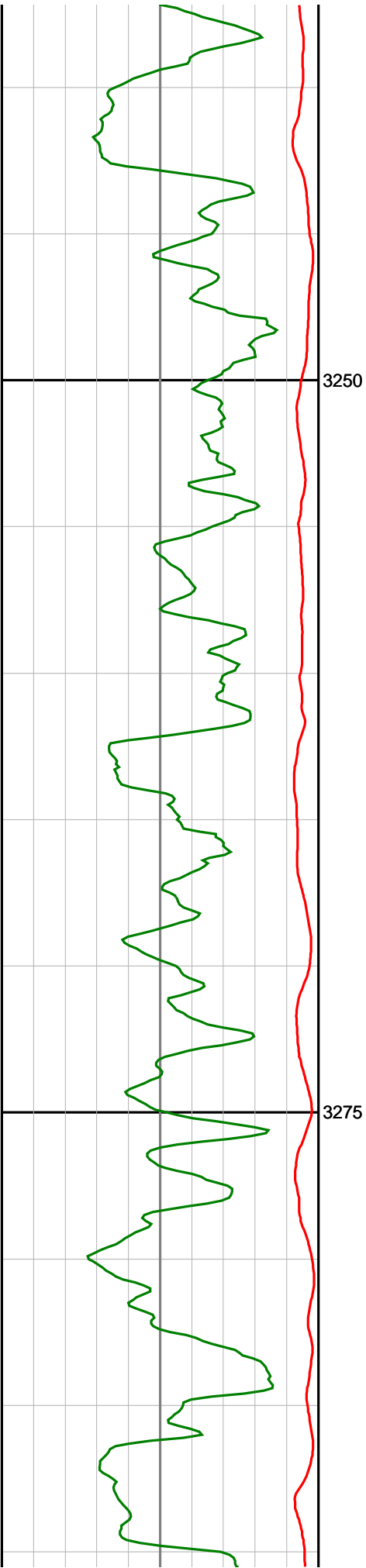


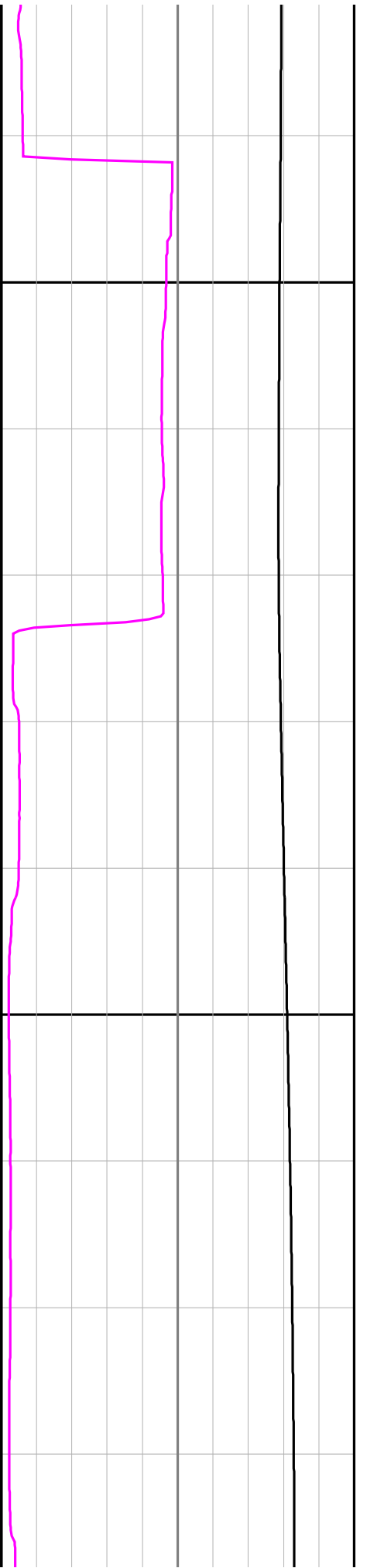
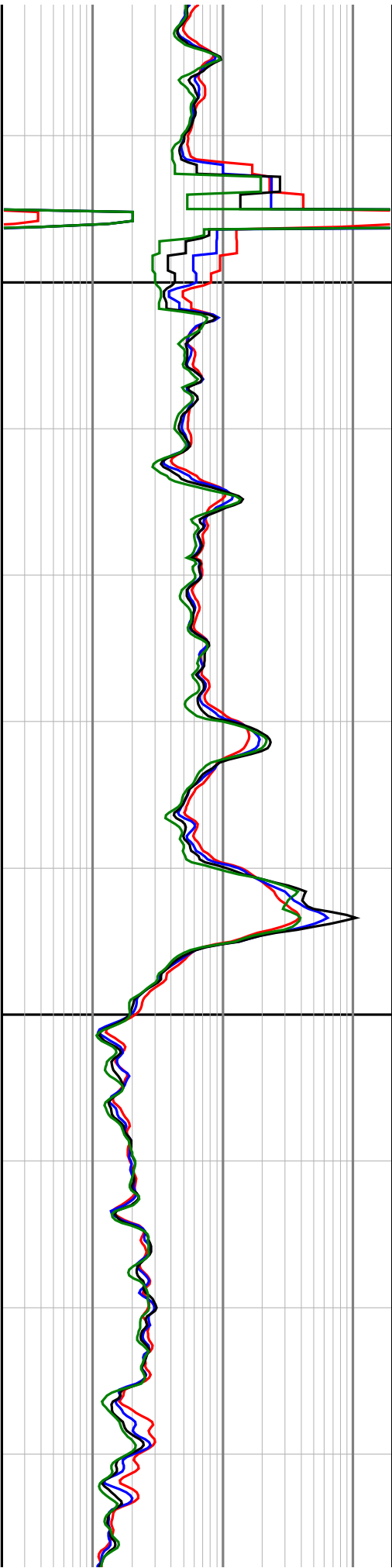
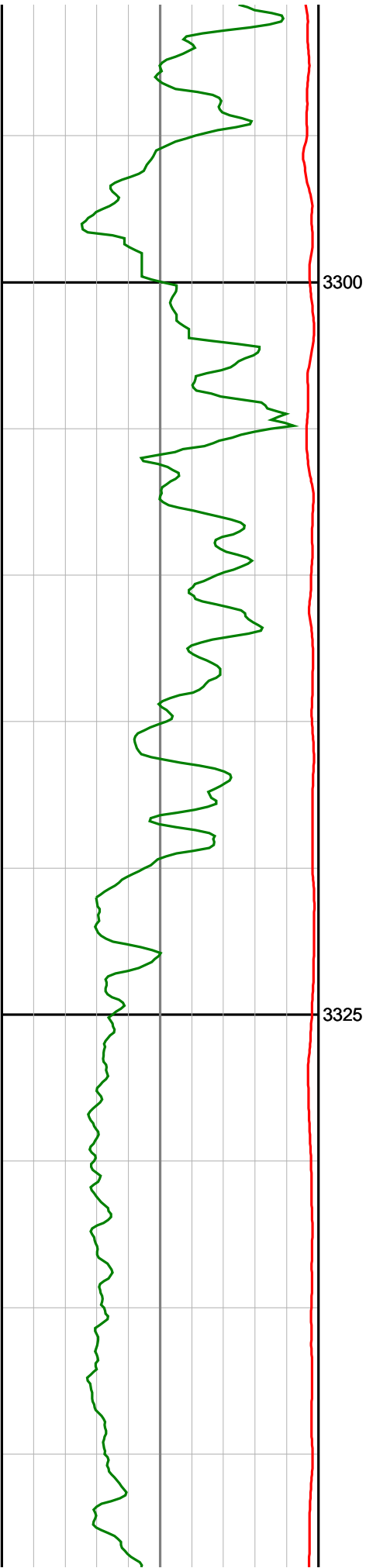


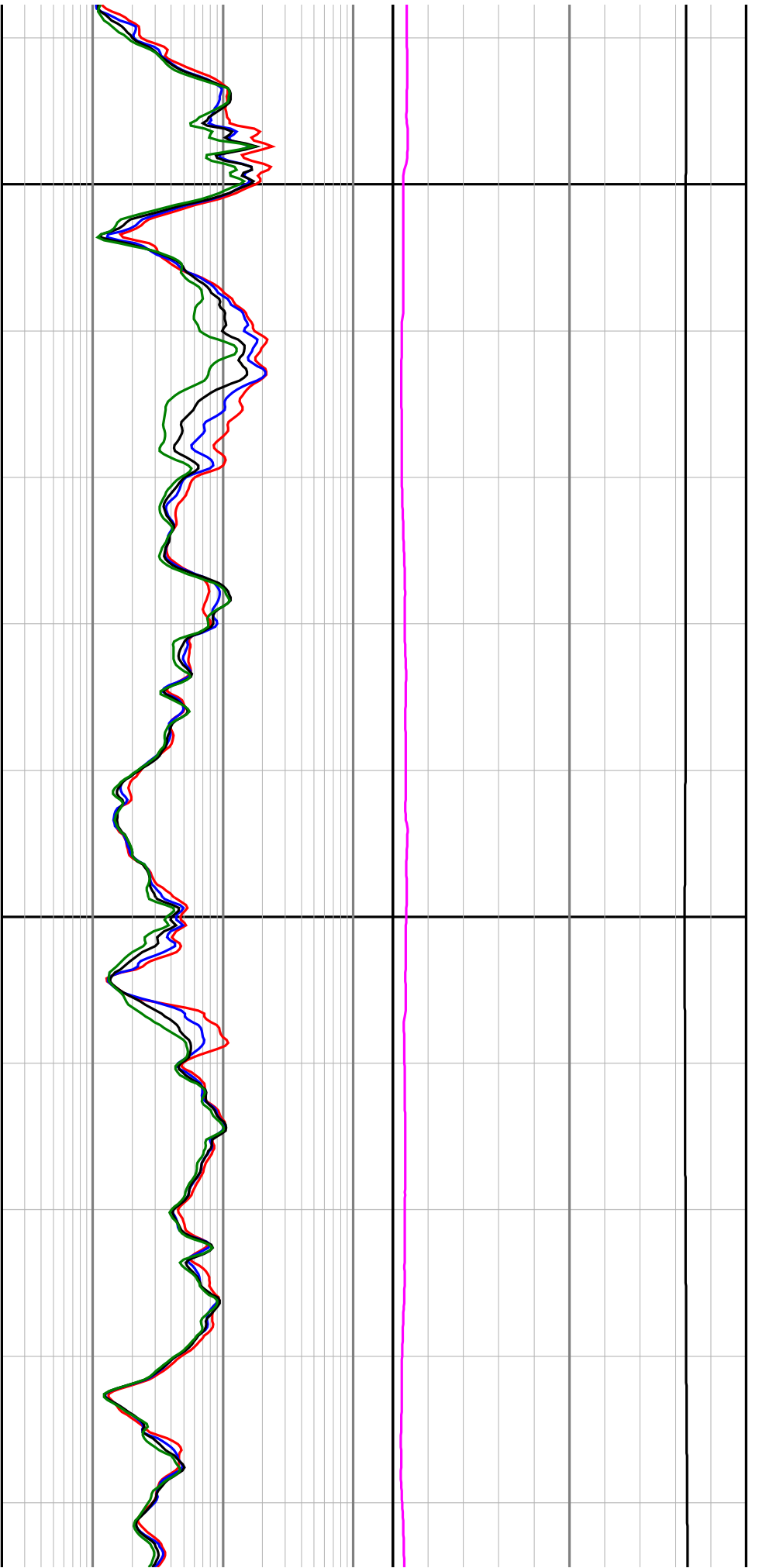
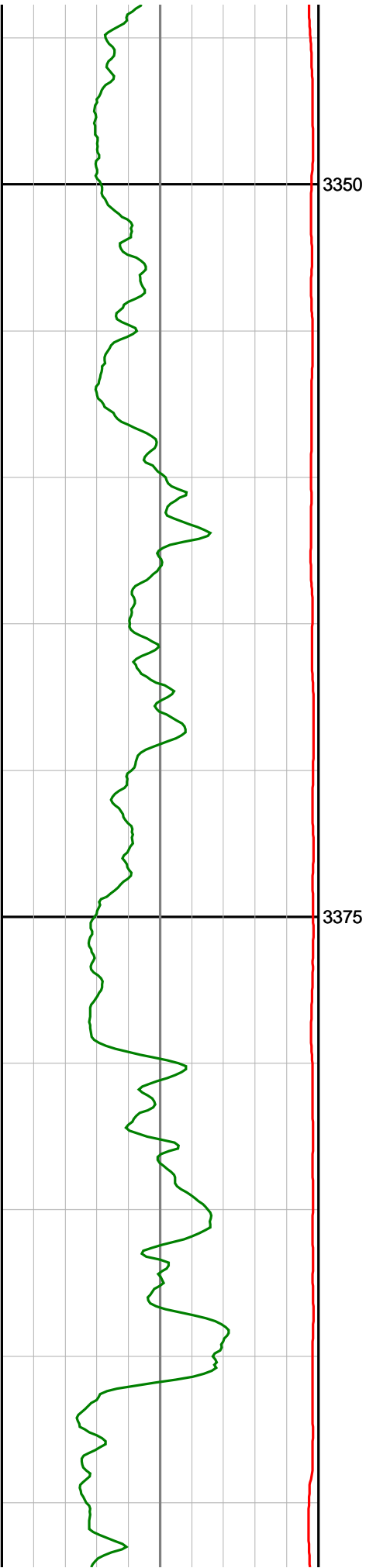


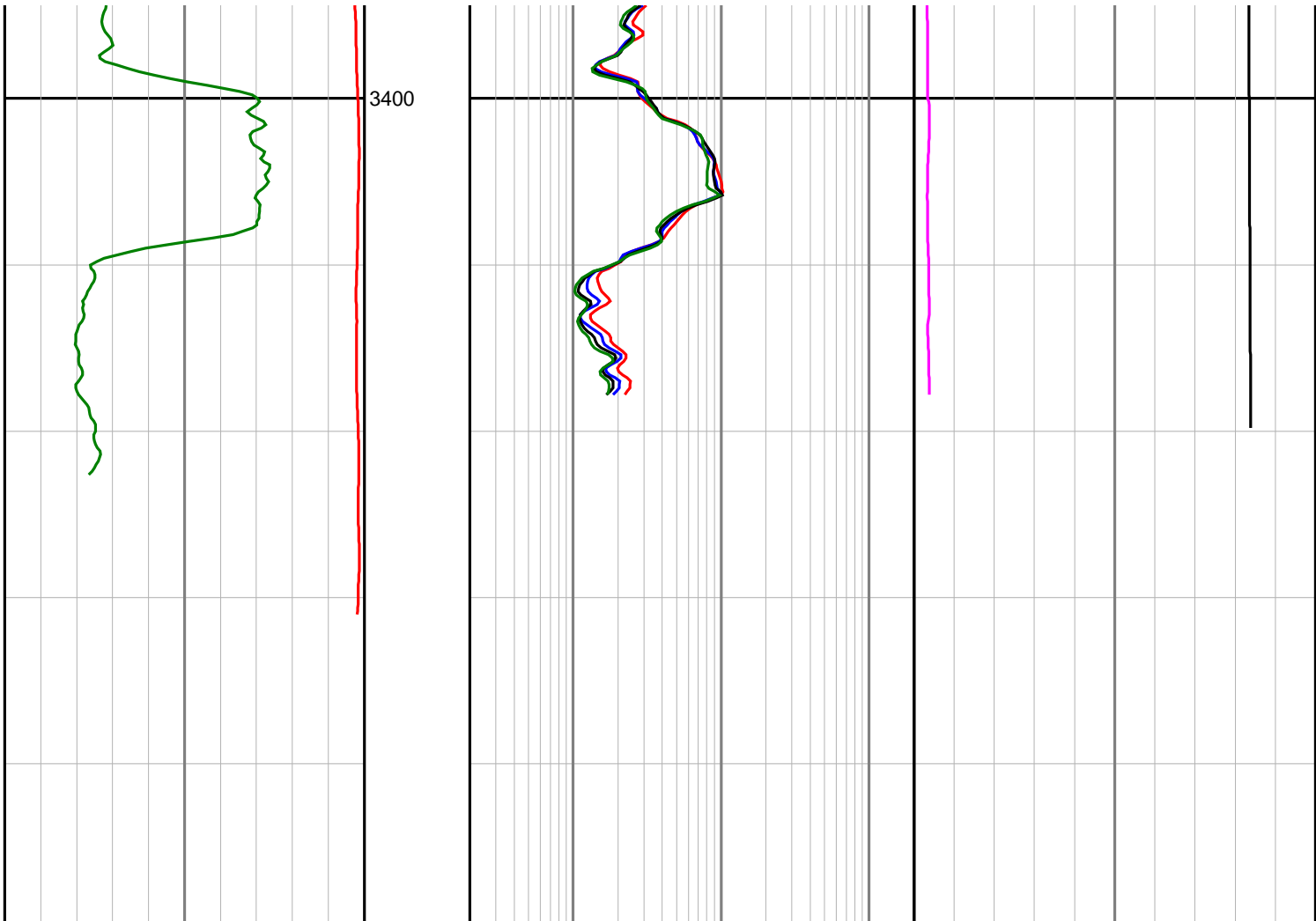












<p>Gamma Ray (SGRC) 0 200 api</p>	<p>Depth MDRT 1 : 200</p>	<p>X-Shallow Phase Resistivity (SEXP) 0.2 200 ohmm</p>	<p>Formation Exposure Time (SFXE) 0 50 hrs</p>
<p>Rate of Penetration (SROP) 500 0 m/hr</p>		<p>Shallow Phase Resistivity (SESP) 0.2 200 ohmm</p>	<p>Temperature (STEM) 0 100 deg C</p>
		<p>Medium Phase Resistivity (SEMP) 0.2 200 ohmm</p>	
		<p>Deep Phase Resistivity (SEDP) 0.2 200 ohmm</p>	